

## 180W SemiFlex Solar Panel with Integrated Edge Seal Installation Instructions

STOP! BEFORE CONTINUING:

SCAN THE QR CODE BELOW TO WATCH THE STEP-BY-STEP VIDEO

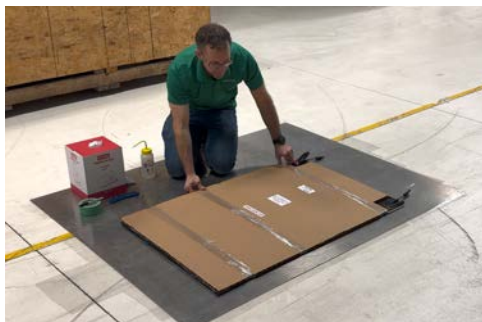


[OR CLICK HERE TO WATCH THE STEP-BY-STEP VIDEO](#)

Clean the installation location with a >90% concentration of isopropyl alcohol and a **clean** towel or rag.



Pick up the 180W solar panel packaged in cardboard with plastic banding. Place the box near the installation location, oriented correctly (**sticker shows THIS SIDE UP**).



Cut the banding and remove it.



Once the bands are removed, the cardboard sandwiching the panel can be removed. Gently slide the bottom piece of cardboard out.



Slide the panel approximately into place. Now, you can remove the plastic clips holding the thin plastic.



**THIS STEP IS CRITICAL:** To install the panel where intended, slowly pull the release liner, exposing 1-2 inches of the butyl adhesive. Ensure the panel is aligned as desired, and when

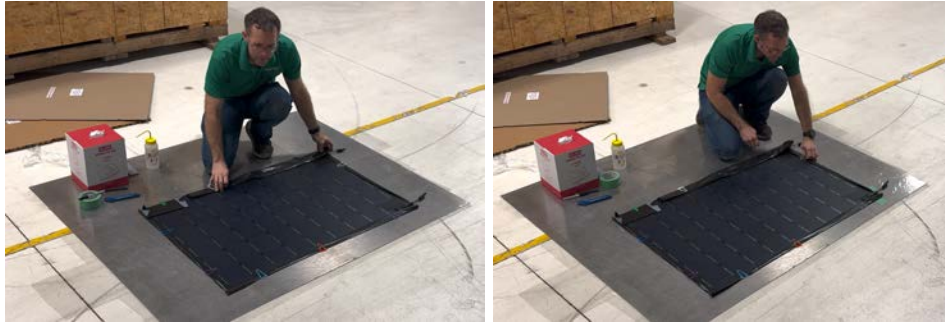
# PowerFilm<sup>®</sup>

ASSEMBLED IN THE USA

## SOLAR

---

ready, set the exposed butyl portion in the installation location. Use a plastic felt-edged squeegee to install the panel.



**IMPORTANT:** Strokes for the squeegee should start in the center of the panel and move at an angle toward the edge and the remaining release liner.



Slowly pull the double-release liner, and use the felt-tipped squeegee to work the panel down.

Start in the center portion with the solar cells and fiberglass and work out along the integrated butyl adhesive border. The panel's position will be permanently fixed at this point, and there is no going back. **DO NOT** attempt to pull the panel up, or you will damage it.

Once complete, dispose of the release liner and continue to work out any potential air pockets under the panel and integrated edge tape exterior.